

PART OF THE SE 1/4, OF SECTION 22, T.7N., R.1E., S.L.B. & M.  
CASCADES AT MOOSE HOLLOW CONDOMINIUM PHASE 5

IN WEBER COUNTY  
SCALE 1" = 30'

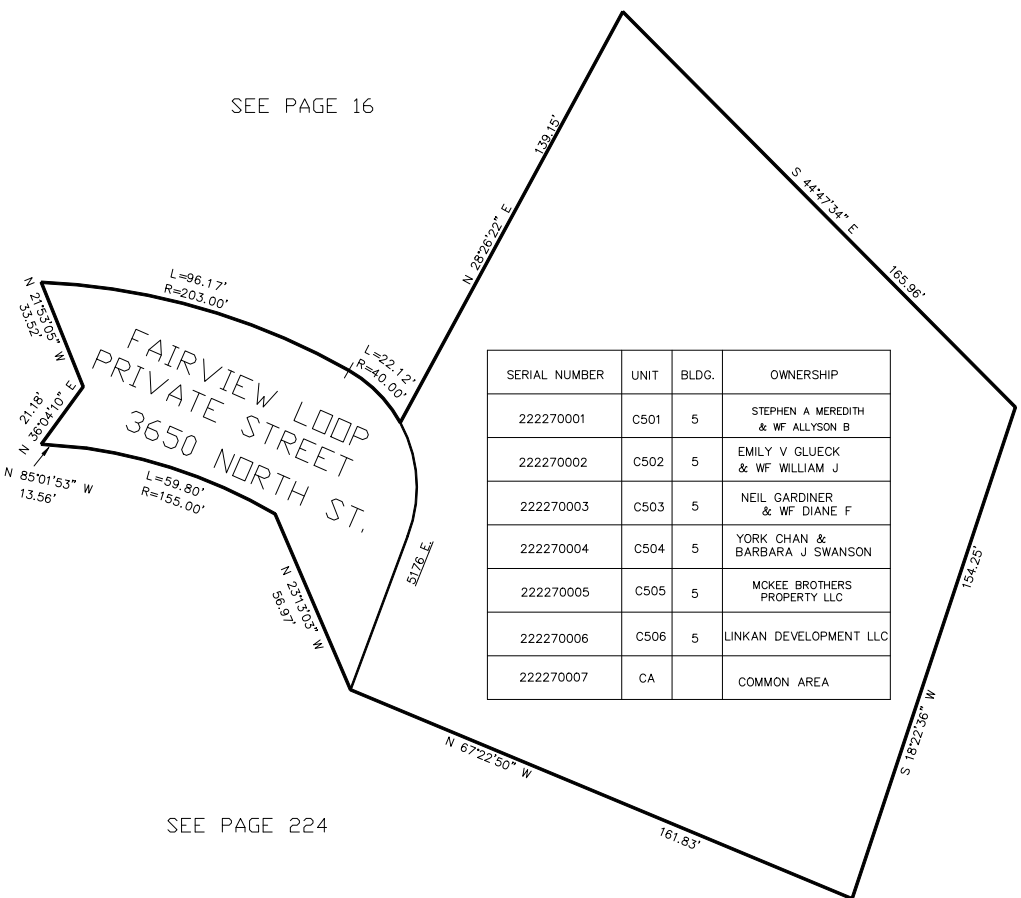
TAXING UNIT: 203

SEE PAGE 16

SEE PAGE 16

SEE PAGE 16

SEE PAGE 224



SERIAL NUMBER	UNIT	BLDG.	OWNERSHIP
222270001	C501	5	STEPHEN A MEREDITH & WF ALLYSON B
222270002	C502	5	EMILY V GLUECK & WF WILLIAM J
222270003	C503	5	NEIL GARDINER & WF DIANE F
222270004	C504	5	YORK CHAN & BARBARA J SWANSON
222270005	C505	5	MCKEE BROTHERS PROPERTY LLC
222270006	C506	5	LINKAN DEVELOPMENT LLC
222270007	CA		COMMON AREA

10' UTILITY & DRAINAGE EASEMENTS EACH  
SIDE OF PROPERTY LINES AS INDICATED  
BY DASHED LINES EXCEPT AS OTHERWISE  
SHOWN.

FOR COMPLETE ENG DATA SEE  
ORIGINAL DEDICATION PLAT IN  
BOOK 61, PAGE 27 OF RECORDS.